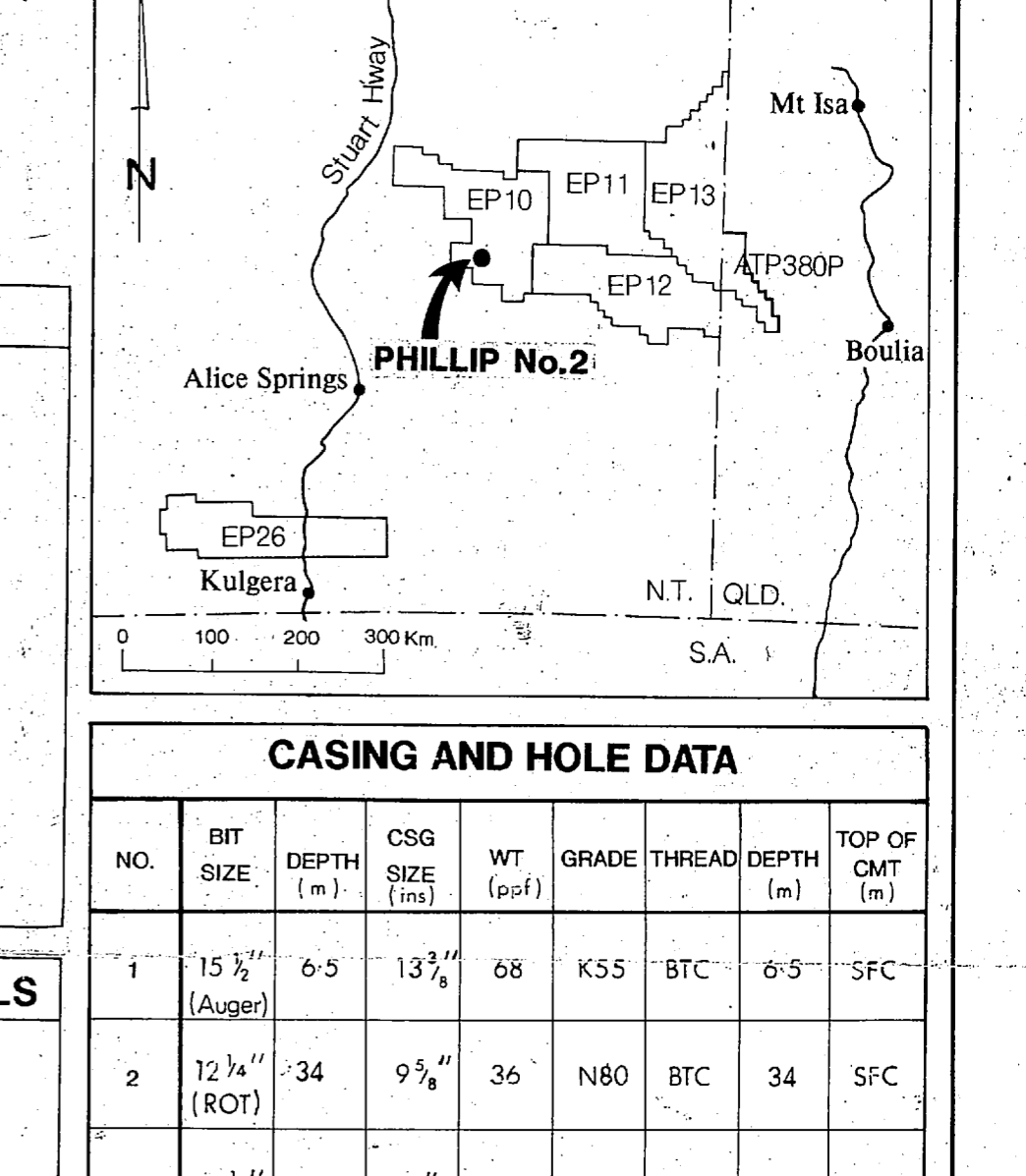


Pacific Oil & Gas Pty. Limited Composite Well Log PHILLIP NO.2

LOG DATA table with columns: DATE, TD, BHT, RM, N/A, DATE, TD, BHT, RM, N/A, DATE

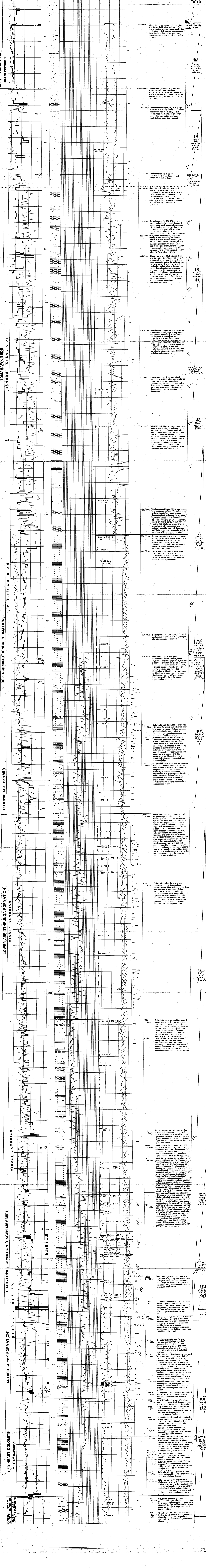
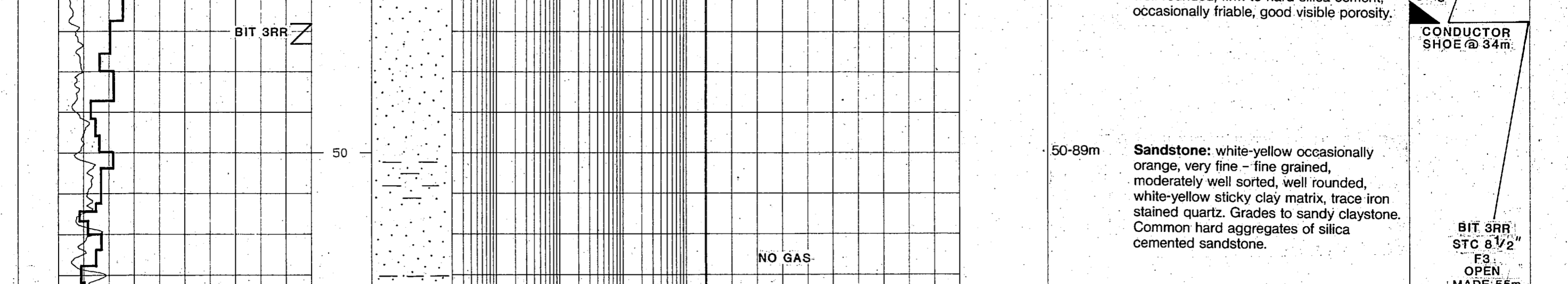
GENERAL DATA table with columns: Date Released, Date at TD, Total Depth, Date Rig Released, Permit, AMG, Longitude, Latitude, Elevation, Mud Sheet, Map Type, Basin, Status, CRAE Drillhole No.



GEOLOGICAL SYMBOLS table listing symbols for Conglomerate, Sandstone, Siltstone, Claystone, Limestone, Dolomite, Chert, etc.

ENGINEERING SYMBOLS table listing symbols for Deviation Survey, Casing Shoe, Drill Stem Test, etc.

CASING AND HOLE DATA table with columns: NO., DATE, DEPTH, SIZE, WT, GRADE, THREAD, DEPTH, TOP OF CMT



Detailed lithological descriptions for various depths, including notes on sandstone, dolomite, and shale characteristics, such as 'Sandstone: white-yellow occasionally orange, very fine - fine grained, moderately well sorted, well rounded...' and 'Dolomite: light grey, dispersive, sandy to greenish grey, dispersive...'.

Engineering details and notes on the right side of the log, including 'CONDUCTOR', 'BIT SET', 'OPEN', 'MADE 2.1m', 'TOP OF CEMENT ANNULES', 'NEB 11', 'NEB 12', 'NEB 13', 'NEB 14', 'NEB 15', 'DST No. 1', 'DST No. 2', 'DST No. 3', 'DST No. 4', 'DST No. 5', 'DST No. 6', 'DST No. 7', 'DST No. 8', 'DST No. 9', 'DST No. 10', 'DST No. 11', 'DST No. 12', 'DST No. 13', 'DST No. 14', 'DST No. 15'.