





COMPANY PACIFIC OIL & GAS DEPTH LOGGED FROM Surface TO 1493.1m

RIG ROCKDRILL RIG 20 DATE LOGGED FROM 17/5/88 TO 29/6/88

WELL PHILLIP 2 FIELD WILDCAT COUNTRY NORTHERN TERRITORY AUSTRALIA ELEVATION G L 421m

CO-ORDINATES 22°16' 15"S 135°16' 15"E (12m N of Phillip 1) R T 423.5m

GEARHART PTY. LTD. Geodata Services AUSTRALIA Telephone: (08) 46 6592 No. AH1500100 Telefax: AA87137

LITHOLOGY SANDSTONE, SILTSTONE, CLAYSTONE, SHALE, LIME STONE, DOLOMITE, CALCARENITE, LITHIC, MICACEOUS, DOLOMITIC, CALCAREOUS, GLAUCONITE, PYRITE, CALCULITITE, ANHYDRITE, SILICEOUS, CHERT

LOGGING ENGINEERS S. WILLIAMSON CHROMATOGRAPH SHIMADZU FID TOTAL GAS RECORDER SHIMADZU FID H2S RECORDER GENERAL MONITORS 2170

ABBREVIATIONS NB New bit, NCB New core bit, CS Casing shoe, SWC Slide-wire coring, EL Electric log, RRB Return bit, WOB Weight on bit, RPM Revolutions per minute, PP Pump pressure, SPM Strokes per minute, CR Circulated returns, NR No returns, TG Trip gas, DS Directional survey, WT Wider trip, POH Pull-out of hole, RWH Run in hole, WOH Wash on weather, LAT Logged after trip, LCM Lost circulation material, DC Depth connection, DST Drill stem test, CALCALCULITITE, ANHYDRITE, SILICEOUS, CHERT

INSTRUMENTS CHECKED DAILY 24 HRS LOGGING SERVICE SCALE 1:500

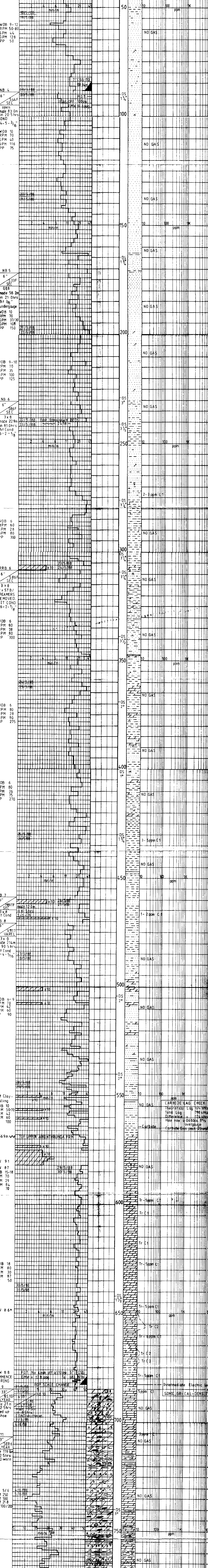
MUD TYPE Variable details specified in drilling rate column POROSITY (Visible or inferred from texture) MATRIX POROSITY, VUGULAR POROSITY

BIT SIZE, CASING SIZE, CASING SHOES

WEIGHT LOGAL, MG, MG, MG, YP, GEL, pH, Filtrate API m/30 minutes, Core thickness, Salinity, Sand content, Oil content, Water loss, Solids content, Absorbency of filtrate, Gypsum total/diluted

CHROMATOGRAPHIC ANALYSIS Methane C1, Ethane C2, Propane C3, Butane C4, Pentane C5

DRILLING & CORING DATA, DRILLING RATE & DATA, CUTTINGS LITHOLOGY



CUTTINGS GAS CHROMATOGRAPHIC ANALYSIS

CUTTINGS GAS (Units)

LITHOLOGY DESCRIPTION MUD DATA & REMARKS

Surface bulk dust... SANDSTONE:lt brn,off wh,vf-f g,wll srt,hd, sil/dol cnt,tight,v clayey mtx i p,pr dol... MUD DATA w 8.7 PV 5 V 37 YF 7 Gel 1/1 F 11.5 PH 8.0 Csk 1 Cl 2.2k W/S 97.2/5.2 Snd 2.2%



